

What do I need to Vote?

Everyone is expected to show ID to vote. If you don't have your ID but your name is on the voters list on election day, you can still vote if another eligible voter vouches for you. If you are not on the voters list, you will be asked to take an oath to vote. There are 2 options of what ID you can show.

Option 1:

Show 1 piece of government-issued photo ID. Examples include:

- Driver's license
- Enhanced Manitoba identification card
- Passport\*
- Treaty card\*

Option 2:

Show two documents that include your name. Examples include:

- Manitoba Health card
- Social Insurance card
- Utility bill
- Credit card

*\*Important: If none of your ID includes your address, you will be asked to sign a declaration of address. A more complete list of acceptable ID is available on Elections Manitoba website. You will need ID to vote in the advanced polls.*

Don't Have a Permanent Address?

You CAN vote if you don't have a permanent address. If you are staying at a shelter or hostel, you vote in the electoral division in which your shelter is located.



Services for people with print disabilities including large print ballots, Braille ballots and magnifiers are available at every poll.

Sign language is available with advanced notice.

Interpretation is available by phone at all voting locations.

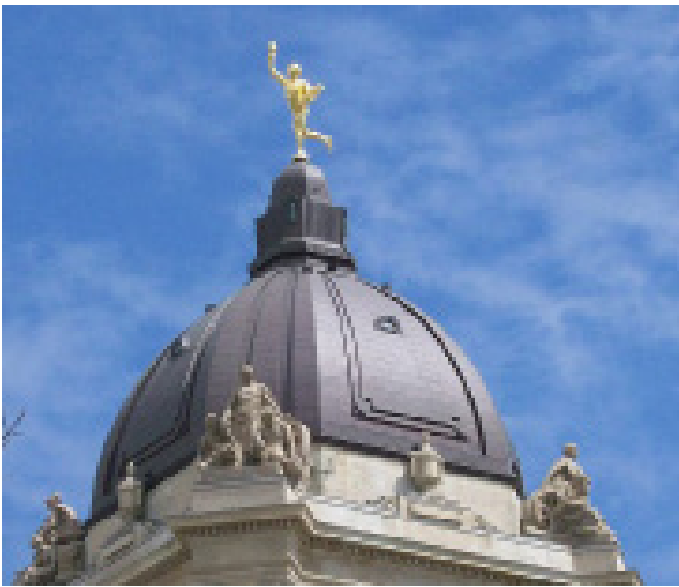
You can vote in your home if you cannot leave and would like to vote there.

Call 1-866-628-6837 for more information.

Student Voting

If you are an eligible voter attending school inside Manitoba, you can vote in the electoral division you live in while attending school if your course of study is longer than 6 months. For example, if you live in Thompson but attend University of Winnipeg, vote using your Winnipeg address.

2019 Manitoba Provincial Election  
If you live in Point Douglas, get ready to vote!



The Manitoba Provincial Election is now on Tuesday, September 10, 2019. You can vote between 8:00 am and 8:00 pm.

Where do I vote?

On Election Day, go to the polling place in your neighbourhood between 8:00 am and 8:00 pm. Your local polling station is usually within a few blocks of your home. If you received a voting card, it will say where to vote. If not, you may need to call Elections Manitoba or visit [electionsmanitoba.ca](http://electionsmanitoba.ca) for the location.

You do NOT have to be registered in advance to vote on election day. You can register and vote at the same time. Please see the back of this guide for I.D. needed.

What if I work on Election Day?

If your regular shift does not provide three hours off between 8:00 am 8:00 pm, please ask your supervisor to schedule time to vote. You are entitled to your regular day's wages.

Why vote?

In the 2016 election, only 57.4% of eligible voters voted. In inner city areas, the turnout was even lower. Your vote is your voice. If you don't vote, your voice and the issues that are important to you will not be heard.

You vote for your local MLA (Member of Legislative Assembly). The political party that elects the most MLAs becomes the government. The leader of that party becomes Premier.

You can vote if:

- You are a Canadian citizen
- You are 18 years of age on or before election day (Birthday September 10, 2001 or earlier)
- You have resided in Manitoba for at least 6 months immediately before election day - March 10th, 2019 or earlier. (This rule is waived for Manitoba students attending school outside of the province who plan to return to live in Manitoba after school.)

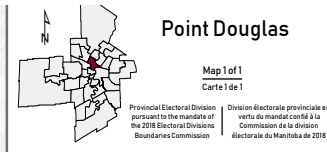
Did you know? Every vote counts!

In some ridings less than 150 votes separated the top two candidates during the 2016 provincial election.

Top two candidates in each riding by votes (2016)		
	Votes	Difference
Elmwood		
Maloway, Jim	2993	107
Langevin, Sarah	2886	
The Maples		
Saran, Mohinder	2832	127
Sidhu, Kaur	2705	

If you have any more questions about how and where to vote call Elections Manitoba and speak to a live person: 1-866-628-6837





# What riding do you live in?

Check out this map to find out if your riding is Point Douglas or visit [www.electionsmanitoba.ca](http://www.electionsmanitoba.ca).

## What is a riding?

Manitoba is divided into 57 ridings, with over 20,000 people in each area. The majority, 32, are in Winnipeg. This makes voting in Winnipeg even more important because if a party wins all of Winnipeg, they form the government.

## Who are my choices for voting?

The major parties are Progressive Conservative Party of Manitoba (PC), Manitoba Liberal Party (Lib.), Green Party of Manitoba (GPM) and New Democratic Party of Manitoba (NDP). Your riding might also have candidates from Communist Party of Canada - Manitoba (CPC-M), Manitoba Forward Party (MBFWD), Manitoba First (MF) and independent candidates.

Candidate	Party Contact Info	Party Website
Smith, Bernadette (NDP)	1 (877) 863-2976	<a href="http://www.todaysndp.ca">www.todaysndp.ca</a>
Wenuik, Micheal (MBFWD)	204-897-8378	<a href="http://www.manitobaforward.ca">www.manitobaforward.ca</a>
Kess, Jenn (GPM)	(204) 488-2831	<a href="http://www.greenparty.mb.ca">www.greenparty.mb.ca</a>
Sanderson, Richard (Lib.)	(204) 988-9380	<a href="http://www.manitobaliberals.ca">www.manitobaliberals.ca</a>
Redmond, Michele (PC)	1 (800) 663-8679	<a href="http://www.pcmanitoba.com">www.pcmanitoba.com</a>
Fainman, Fagie (CPC-M)	(204) 586-7824	<a href="http://communist-party.ca/manitoba">communist-party.ca/manitoba</a>

## Important Dates to Remember

- Nominations of candidates close **Monday, August 26th, 2019**. That means new candidates can still apply to run for this 2019 election up until August 26 at 1:00 pm.
- Advance voting is available **Thursday, August 29th to Thursday, September 5th**. You can vote at any Advance Polling location province-wide. Check [electionsmanitoba.ca](http://electionsmanitoba.ca) for locations.
- Last day to apply for absentee voting is **Saturday, September 7th, 2019**, by 8:00 pm
- Last day to apply for home-bound voting is **Monday, September 9th, 2019**, by 8:00 pm

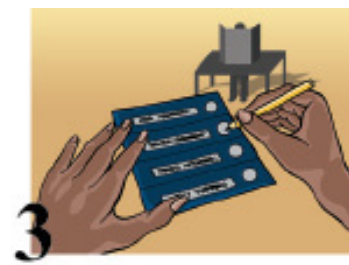
## Four Easy Steps to Voting on Election Day



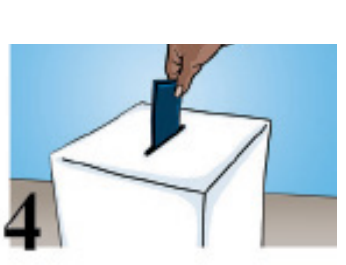
Welcome



Introduce yourself. The voting officer will give you a ballot.



Mark your ballot behind the screen.



Go back to the voting officer with your folded ballot. Your ballot is put in the box.

Want more information on any riding? Check out CBC's Manitoba Vote 2019 webpage:

[www.cbc.ca/news/canada/manitoba/2019-manitoba-votes-riding-profile-index-1.5248338](http://www.cbc.ca/news/canada/manitoba/2019-manitoba-votes-riding-profile-index-1.5248338)

And you can also follow their Election Fact-checker series online.

If you have any more **questions** about how and where to vote call **Elections Manitoba** and speak to a live person: **1-866-628-6837**